

Annual Report

of

Occupational Injuries and Illnesses

2023

Prepared by

Mississippi Workers' Compensation Commission

P. O. Box 5300

Jackson, Mississippi 39296-5300

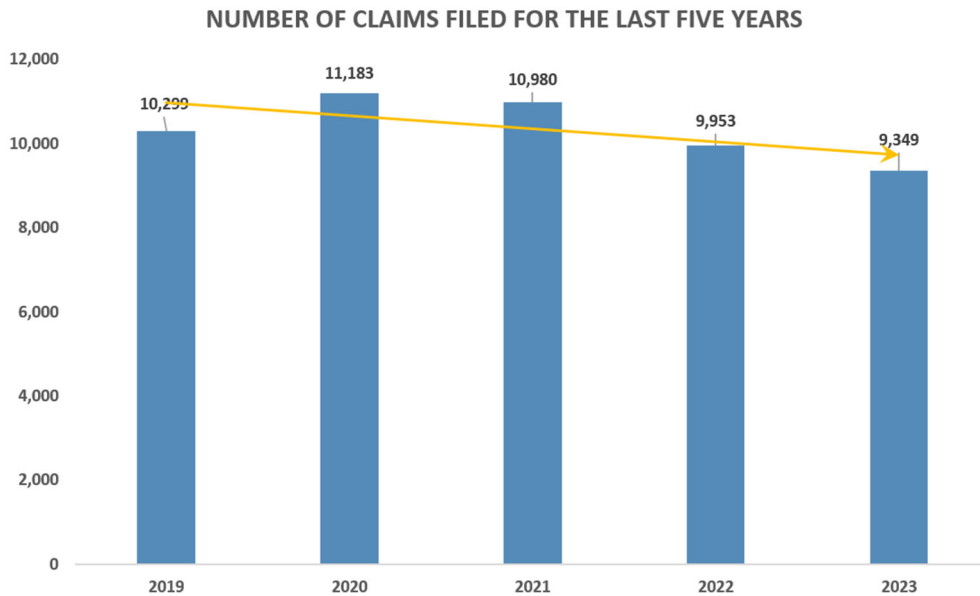
(601) 987-4200

Table of Contents

Statistical Highlights	1
Injuries/Illnesses By Industry... ..	2
Injuries/Illnesses Industry Breakdown.	3-4
Injuries/Illnesses By Gender.....	5
Death Claims by Cause.....	5
Injuries/Illnesses By Nature	6
Injuries/Illnesses By Part Of Body	7
Injuries/Illnesses By Cause	8
Injuries/Illnesses By Month.....	9
Injuries/Illnesses By Day	9
Injuries/Illnesses By County of Occurrence.....	10
Statistics Associated With Self-Insured Employers	11

2023 STATISTICAL HIGHLIGHTS

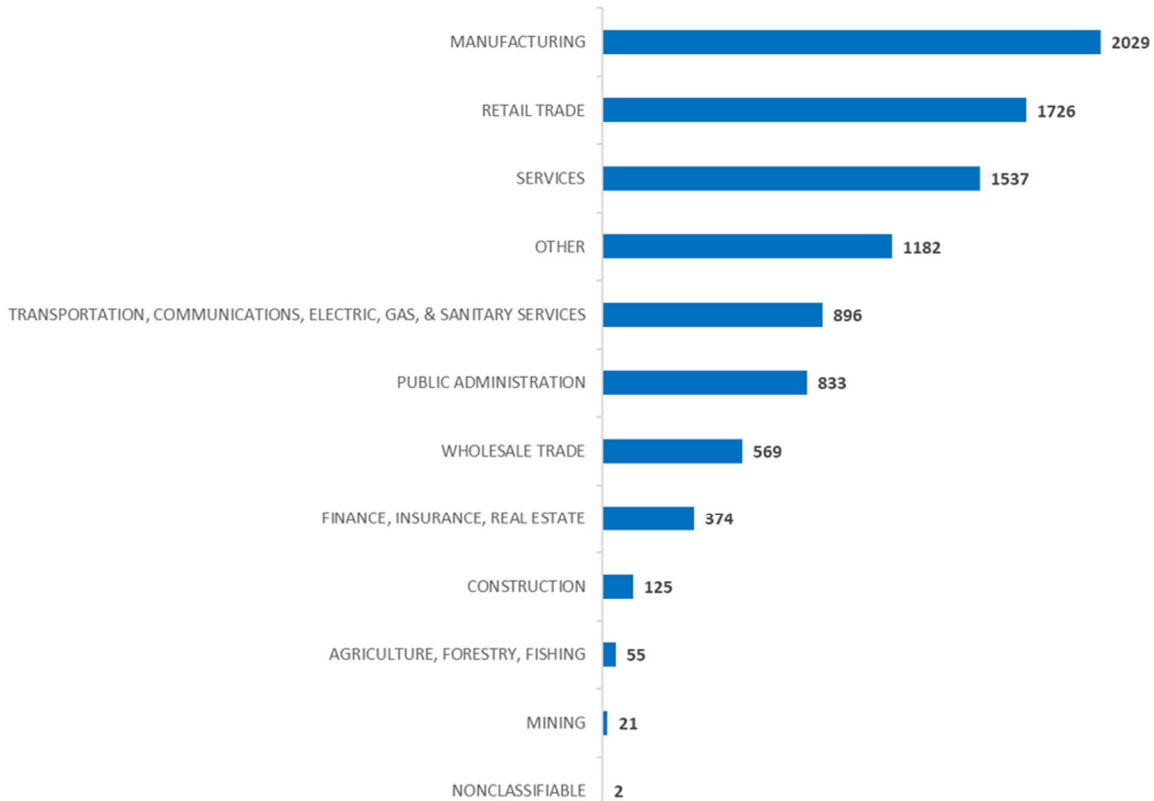
- There were 9,349 claims filed in 2023.
- There were 2,315 claims controverted in 2023.
- Hinds County had the most occurrence of injuries with a total of 948 claims. Desoto County followed with 763 claims.
- Females were reported less frequently with 4,057 claims (43.4%).
- Major injuries or illnesses occurred on Monday, with a total of 1,747 claims.
- The largest number of claims were reported in August with 901 claims or 9.6%. March followed with 857 claims or 9.2%.
- Strains were the leading nature of injury with 2,745 claims or 29.4%.
- The highest occurrence of injuries involved multiple body parts totaling 1,120 claims or 12.0%. Claims for shoulder injuries followed with a total of 977 claims or 10.5%.
- The leading cause of injury was the Fall/Slip/Trip category, with a total of 1,103 claims or 11.8%. Lifting followed with 828 claims or 8.9%.
- There were 49 fatalities reported in 2023.
- There were 7,318 claims received from Insurance carriers and 1,969 claims were received from Self-Insured employers.



INJURIES/ILLNESSES BY INDUSTRY 2023

INDUSTRY	NUMBER	PERCENT
AGRICULTURE, FORESTRY, FISHING	55	0.59%
MINING	21	0.22%
CONSTRUCTION	125	1.34%
MANUFACTURING	2,029	21.70%
TRANSPORTATION, COMMUNICATIONS, ELECTRIC, GAS, & SANITARY SERVICES	896	9.58%
WHOLESALE TRADE	569	6.09%
RETAIL TRADE	1,726	18.46%
FINANCE, INSURANCE, REAL ESTATE	374	4.00%
SERVICES	1,537	16.44%
PUBLIC ADMINISTRATION	833	8.91%
NONCLASSIFIABLE	2	0.02%
OTHER	1,182	12.64%
TOTAL	9,349	100.00%

INJURIES/ILLNESSES BY INDUSTRY 2023



INJURIES/ILLNESSES BY INDUSTRY BREAKDOWN 2023

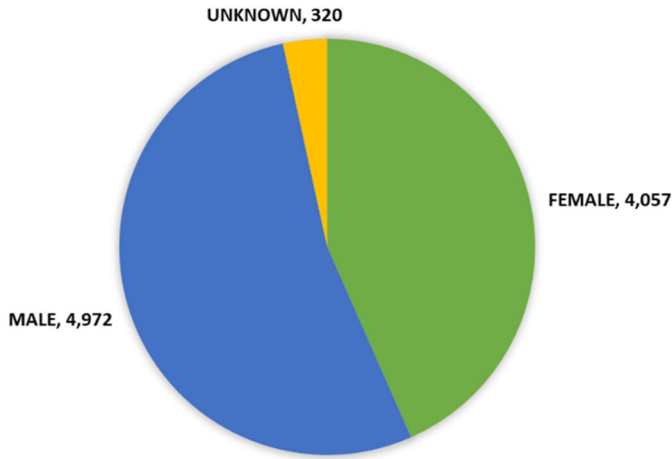
CATEGORY	NUMBER	PERCENT
AGRICULTURE, FORESTRY, FISHING		
AGRICULTURE, FISHING, HUNTING, FORESTRY, LIVESTOCK	55	0.59%
MINING		
MINING, METAL, COAL, OIL & GAS	21	0.22%
CONSTRUCTION		
HEAVY BUILDING CONSTRUCTION/GENERAL CONTRACTORS AND SPECIAL TRADE	125	1.34%
MANUFACTURING		
FOOD PRODUCTS, LEATHER, FURNITURE, LUMBER, WOOD, TEXTILE MILL	926	9.90%
STONE, CLAY, GLASS, AND CONCRETE PRODUCTS	202	2.16%
PRIMARY METAL INDUSTRIES	594	6.35%
FABRICATED METAL PRODUCTS, EXCEPT MACHINERY AND TRANSPORTATION EQUIPMENT	42	0.45%
INDUSTRIAL AND COMMERCIAL MACHINERY AND COMPUTER EQUIPMENT	51	0.55%
ELECTRONIC AND OTHER ELECTRICAL EQUIPMENT AND COMPONENTS, EXCEPT COMPUTER EQUIPMENT	96	1.03%
TRANSPORTATION EQUIPMENT	102	1.09%
MEASURING, ANALYZING, AND CONTROLLING INSTRUMENTS, PHOTOGRAPHIC, MEDIAL AND OPTICAL	6	0.06%
MISCELLANEOUS MANUFACTURING INDUSTRIES	10	0.11%
TRANSPORTATION, COMMUNICATIONS, ELECTRIC, GAS, & SANITARY SERVICES		
RAILROAD, LOCAL/SUB TRANSIT, MOTOR FREIGHT/WAREHOUSING	437	4.67%
WATER TRANSPORTATION/TRANSPORTATION BY AIR	110	1.18%
PIPELINES, EXCEPT NATURAL GAS	5	0.05%
TRANSPORTATION SERVICES	9	0.10%
COMMUNICATIONS	208	2.22%
ELECTRIC, GAS, AND SANITARY SERVICES	127	1.36%
WHOLESALE TRADE		
WHOLESALE TRADE -DURABLE/NON-DURABLE GOODS	569	6.09%
RETAIL TRADE		
BUILDING MATERIALS, STORES, FURNISHING, AUTOMOTIVE, MISC. RETAIL	1,726	18.46%
FINANCE, INSURANCE, REAL ESTATE		
DEPOSITORY, INSURANCE AGENTS/BROKER, INVESTMENTS	374	4.00%

INJURIES/ILLNESSES BY INDUSTRY BREAKDOWN 2023

CATEGORY	NUMBER	PERCENT
SERVICES		
HOTELS, ROOMING HOUSE, CAMPS, AND OTHER LODGING PLACES	134	1.43%
PERSONAL SERVICES	27	0.29%
BUSINESS SERVICES	162	1.73%
AUTOMOTIVE REPAIR, SERVICES AND PARKING, MISC. REPAIR	21	0.22%
AMUSEMENT AND RECREATION SERVICES	9	0.10%
HEALTH SERVICES, SPECIALTY OUTPATIENT	523	5.59%
LEGAL SERVICES	36	0.39%
ELEMENTARY AND SECONDARY SCHOOL	322	3.44%
COLLEGES, UNIVERSITIES, PROFESSIONAL SCHOOLS	187	2.00%
JUNIOR COLLEGES AND TECHNICAL INSTITUTES	6	0.06%
VOCATIONAL SCHOOLS, EDUCATIONAL SERVICES	3	0.03%
SOCIAL SERVICES, CHILD DAY CARE, RESIDENTIAL CARE	51	0.55%
MEMBERSHIP ORGANIZATION	24	0.26%
ENGINEERING, ACCOUNTING, RESEARCH MANAGEMENT, AND RELATED SERVICES	31	0.33%
MISCELLANEOUS SERVICES, NOT ELSEWHERE CLASSIFIED	1	0.01%
PUBLIC ADMINISTRATION		
EXECUTIVE, LEGISLATIVE, GENERAL GOVERNMENT EXCEPT FINANCE	586	6.27%
COURTS	126	1.35%
PUBLIC ORDER & SAFETY, POLICE, AND FIRE, CORRECTIONAL	115	1.23%
ADMINSTRATION OF HUMAN RESOURCE PROGRAMS	2	0.2%
ADMINISTRATION OF ENVIRONMENTAL QUALITY AND HOUSING PROGRAM	4	0.04%
NONCLASSIFIABLE		
NONCLASSIFIABLE ESTABLISHMENTS	2	0.02%
OTHER		
INVALID INDUSTRY CODE	1,182	12.64%
TOTAL	9,349	100.00%

INJURIES/ILLNESSES BY GENDER 2023

INJURIES/ILLNESSES BY GENDER

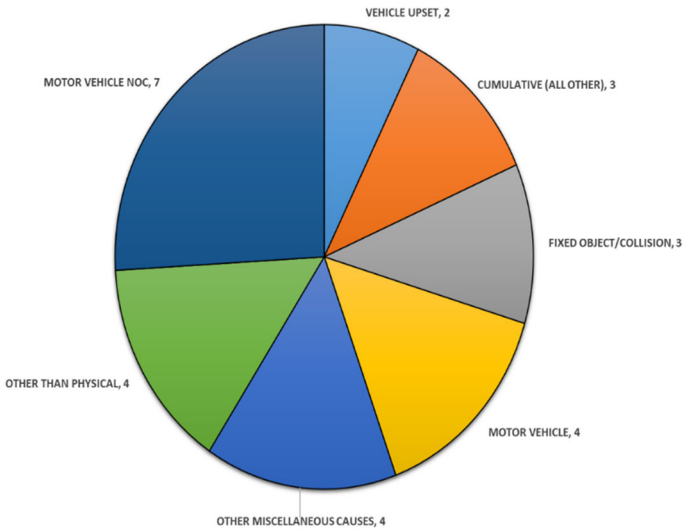


GENDER	NUMBER	PERCENT
FEMALE	4,057	43.40%
MALE	4,972	53.18%
UNKNOWN	320	3.42%
TOTAL	9,349	100.00%

INJURIES/ILLNESSES RESULTING IN DEATH LISTED BY CAUSE 2023

DESCRIPTION	NUMBER	PERCENT
DUST, GASES, FUMES	2	4.08%
MACHINERY	2	4.08%
FALL/SLIP DIFFERENT LEVEL	1	2.04%
FALL/SLIP/TRIP NOC	2	4.08%
MOTOR VEHICLE/COLLISION	2	4.08%
FIXED OBJECT/COLLISION	3	6.12%
VEHICLE UPSET	2	4.08%
MOTOR VEHICLE NOC	7	14.29%
STRAIN/INJURY NOC	2	4.08%
STRICKING/STEPPING ON MOVING PARTS	1	2.04%
PERSON (NOT IN ACT OF CRIME)	2	4.08%
STRUCK/INJURY BY FALLING OBJECT	1	2.04%
HAND TOOL/MACHINE IN USE	1	2.04%
MOTOR VEHICLE	4	8.16%
ABSORPTION/INGESTION/INHALATION	1	2.04%
PANDEMIC	2	4.08%
ANIMAL OR INSECT	1	2.04%
EXPLOSION/FLARE BACK	1	2.04%
OTHER THAN PHYSICAL	4	8.16%
GUNSHOT	1	2.04%
CUMULATIVE (ALL OTHER)	3	6.12%
OTHER MISCELLANEOUS CAUSES	4	8.16%
TOTAL	49	100.00%

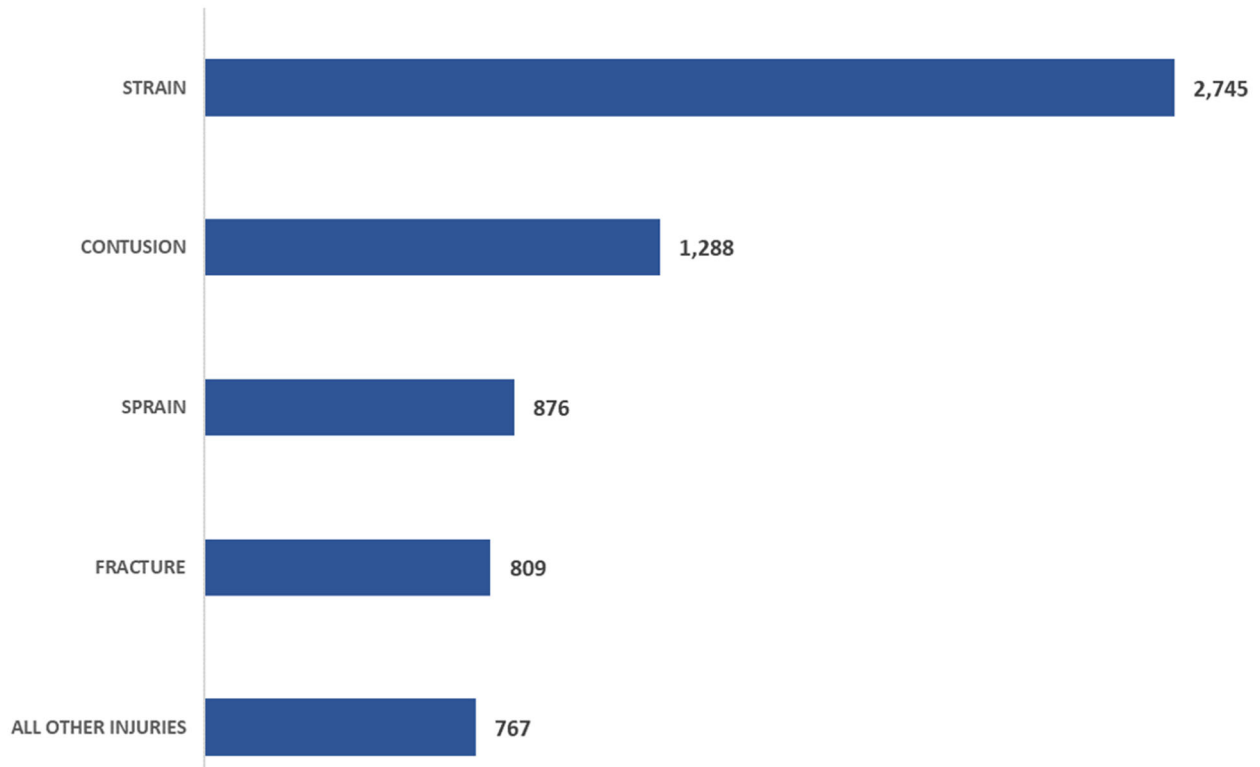
TOP 7 CAUSES OF DEATH



INJURIES/ILLNESSES BY NATURE OF INJURY 2023

DESCRIPTION	NUMBER	PERCENT	DESCRIPTION	NUMBER	PERCENT
NO PHYSICAL INJURY	112	1.20%	SPRAIN	876	9.37%
AMPUTATION	57	0.61%	STRAIN	2,745	29.36%
ANGINA PECTORIS	7	0.07%	SWOON, FAINT, ETC. NO OTHER INJURY	81	0.87%
BURN	171	1.83%	ASPHYXIATION	1	0.01%
CONCUSSION	69	0.74%	VASCULAR LOSS	6	0.06%
CONTUSION	1,288	13.78%	VISION LOSS	1	0.01%
CRUSHING	167	1.79%	ALL OTHER INJURIES	767	8.20%
DISLOCATION	124	1.33%	DUST DISEASE	2	0.02%
ELECTRIC SHOCK	15	0.16%	RESPIRATORY DISORDER, GAS, FUMES	20	0.21%
FOREIGN BODY	43	0.46%	POISONING CHEMICAL (NON-METAL)	4	0.04%
FRACTURE	809	8.65%	DERMATITIS	13	0.14%
FREEZING	2	0.02%	MENTAL DISORDER	7	0.07%
HEARING LOSS/TRAUMATIC	11	0.12%	ALL OTHER OCC. DISEASE	15	0.16%
HEAT PROSTRATION	29	0.31%	LOSS OF HEARING	2	0.02%
HERNIA	66	0.71%	CONTAGIOUS DISEASE	3	0.03%
INFECTION	31	0.33%	CANCER	1	0.01%
INFLAMMATION	218	2.33%	MENTAL STRESS	40	0.43%
LACERATION	520	5.56%	CARPAL TUNNEL SYNDROME	76	0.81%
MYOCARDIAL INFARCTION	14	0.15%	ALL OTHER CUMULATIVE INJURY	47	0.50%
POISONING - GENERAL	5	0.05%	COVID -19	37	0.40%
PUNCTURE	113	1.21%	MULTIPLE INJURY - PHYSICAL ONLY	602	6.44%
RUPTURE	68	0.73%	MULTIPLE INJURY- PHYSICAL & MENTAL	51	0.55%
SEVERANCE	13	0.14%	TOTAL	9,349	100.00%

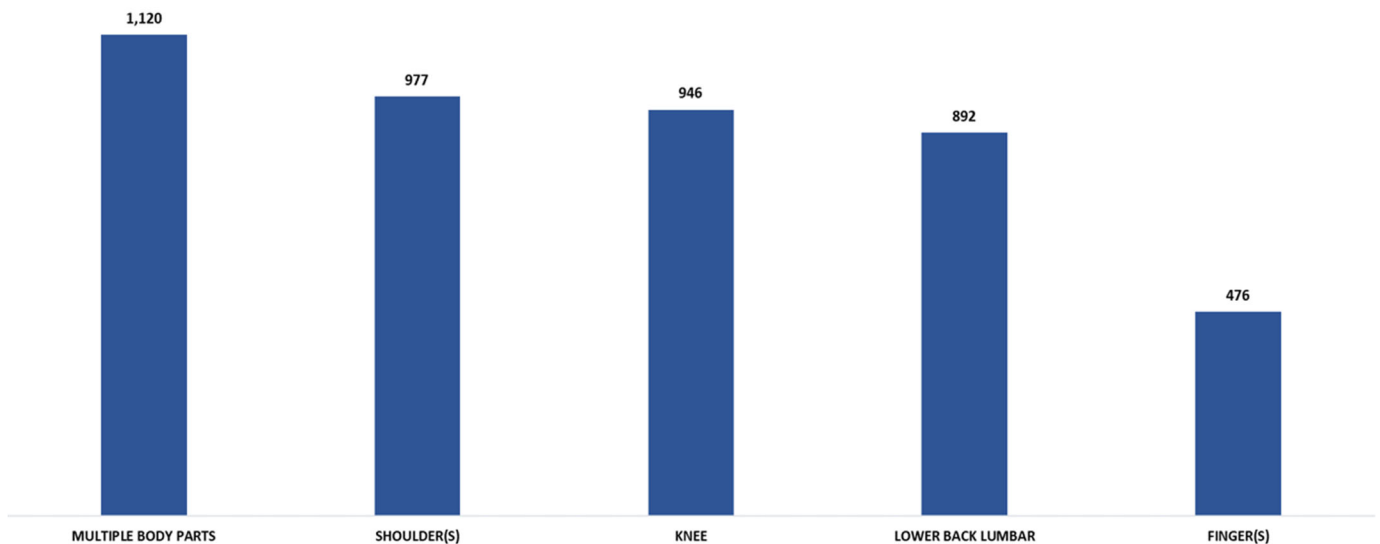
TOP FIVE OCCURRENCES OF INJURY BY NATURE 2023



INJURIES/ILLNESSES BY PART OF THE BODY AFFECTED 2023

DESCRIPTION	NUMBER	PERCENT	DESCRIPTION	NUMBER	PERCENT
MULTIPLE HEAD INJURY	168	1.80%	LOWER BACK-LUMBAR	892	9.54%
SKULL	52	0.56%	DISC (TRUNK)	52	0.56%
BRAIN	41	0.44%	CHEST-RIBS, STERNUM	106	1.13%
EAR(S)	18	0.19%	SACRUM AND COCCYX	2	0.02%
EYES(S)	94	1.01%	PELVIS	31	0.33%
NOSE	19	0.20%	SPINAL CORD - TRUNK	1	0.01%
TEETH	17	0.18%	INTERNAL ORGANS	19	0.20%
MOUTH	10	0.11%	HEART	21	0.22%
OTHER SOFT TISSUE	82	0.88%	MULTIPLE LOW EXTREMITIES	132	1.41%
FACIAL BONES	18	0.19%	HIP	102	1.09%
MULTIPLE NECK INJURY	46	0.49%	THIGH	70	0.75%
VERTEBRAE	35	0.37%	KNEE	946	10.12%
DISK(NECK)	31	0.33%	LOWER LEG	262	2.80%
SPINAL CORD - NECK	8	0.09%	ANKLE	415	4.44%
SOFT TISSUE	57	0.61%	FOOT	412	4.41%
TRACHEA	1	0.01%	TOE(S)	33	0.35%
MULTIPLE UPPER EXTREMITIES	151	1.62%	GREAT TOE	22	0.24%
UPPER ARM	156	1.67%	LUNGS	29	0.31%
ELBOW	144	1.54%	ABDOMEN (INC. GROIN)	136	1.45%
LOWER ARM	214	2.29%	BUTTOCKS	21	0.22%
WRIST	339	3.63%	TRUNK VERTEBRAE	42	0.45%
HAND	464	4.96%	INSUFFICIENT INFO	128	1.37%
FINGER(S)	476	5.09%	NO PHYSICAL INJURY	127	1.36%
THUMB	143	1.53%	MULTIPLE BODY PARTS	1,120	11.98%
SHOULDER(S)	977	10.45%	BODY SYSTEMS & MULTIPLE	160	1.71%
WRIST(S) & HANDS(S)	81	0.87%	WHOLE BODY	57	0.61%
MULTIPLE TRUNK	44	0.47%	TOTAL	9,349	100.00%
UPPER BACK-THORACIC	125	1.34%			

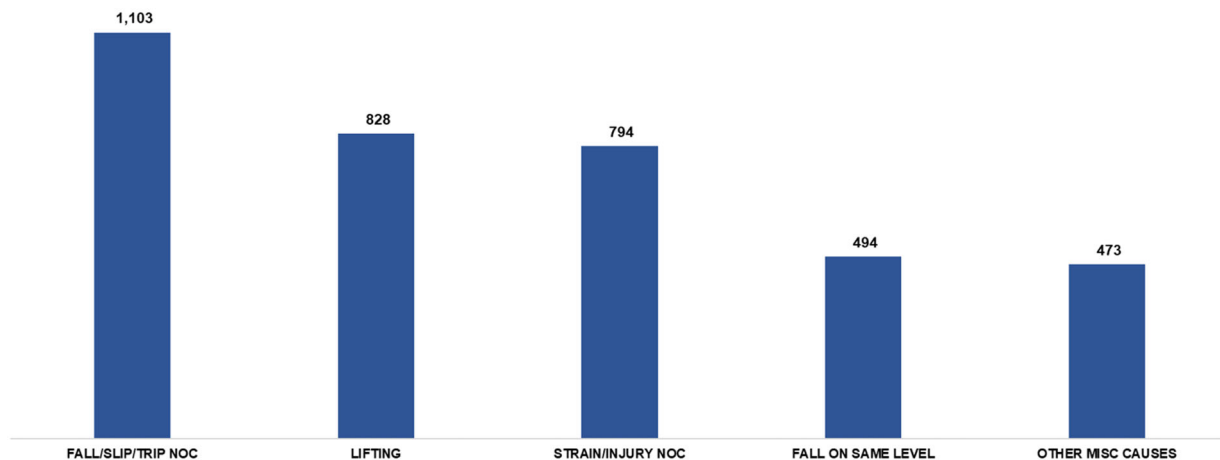
TOP FIVE PARTS OF BODY AFFECTED BY INJURIES 2023



INJURIES/ILLNESSES BY CAUSE OF INJURY 2023

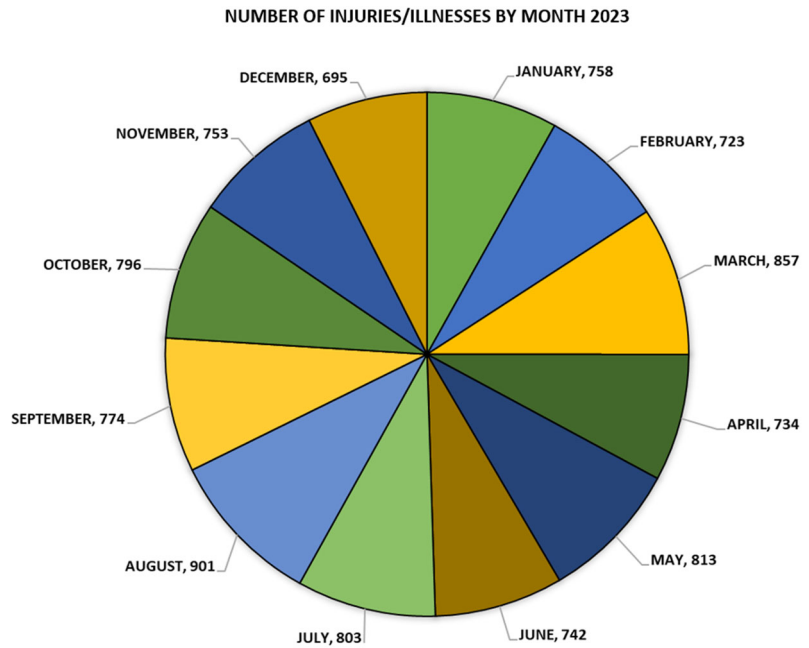
DESCRIPTION	NUMBER	PERCENT	DESCRIPTION	NUMBER	PERCENT
CHEMICALS	35	0.37%	TWISTING	232	2.48%
CONTACT HOT OBJECT OR SUBSTANCE	47	0.50%	JUMPING	41	0.44%
TEMPERATURE EXTREMES	23	0.25%	HOLDING OR CARRYING	102	1.09%
FIRE OR FLAME	23	0.25%	LIFTING	828	8.86%
STEAM OR HOT FLUIDS	51	0.55%	PUSHING OR PULLING	430	4.60%
DUST, GAS, FUMES	13	0.14%	REACHING	89	0.95%
WELDING OPERATIONS	5	0.05%	USING TOOL OR MACHINE	79	0.85%
RADIATION	1	0.01%	STRAIN/INJURY NOC	794	8.49%
CONTACT WITH NOC	52	0.56%	WIELDING/THROWING	11	0.12%
MACHINERY	120	1.28%	STRIKING/STEPPING ON MOVING PARTS	8	0.09%
COLD OBJECT OR SUBSTANCE	3	0.03%	LIFTED/HANDLED OBJECT	33	0.35%
OBJECT HANDLED	120	1.28%	SAND, SCRAP, CLEAN OPERATIONS (N/A)	3	0.03%
CAUGHT IN/BETWEEN NOC	215	2.30%	STATIONARY OBJECT	87	0.93%
ABNORMAL AIR PRESSURE	2	0.02%	STEP ON SHARP OBJECT	21	0.22%
CUTS/SCRAPE BY BROKEN GLASS	16	0.17%	STRIKE AGAINST/STEP ON NOC	57	0.61%
HAND TOOL, NOT POWERED	47	0.50%	PERSON (NOT IN ACT OF CRIME)	205	2.19%
OBJECT BEING LIFTED OR HANDLED	122	1.30%	STRUCK/INJURED BY FALLING OBJECT	311	3.33%
POWERED HAND TOOL	66	0.71%	HAND TOOL/MACHINE IN USE	74	0.79%
CUT/PUNCTURE/SCRAPE NOC	146	1.56%	MOTOR VEHICLE	112	1.20%
COLLAPSING MATERIALS	7	0.07%	MACHINE MOVING PARTS	31	0.33%
FALL/SLIP DIFFERENT LEVEL	256	2.74%	LIFTED OR HANDLED OBJECT	177	1.89%
FROM LADDER, SCAFFOLD	119	1.27%	OBJECT HANDLED BY OTHERS	65	0.70%
FROM LIQUID OR GREASE SPILLS	149	1.59%	STRUCK/INJURED BY NOC	231	2.47%
FALL INTO OPENING	44	0.47%	ABSORPTION/INGESTION/INHALATIONS	34	0.36%
FALL ON SAME LEVEL	494	5.28%	PANDEMIC	29	0.31%
SLIPPED, DID NOT FALL	61	0.65%	ELECTRICAL CURRENT	14	0.15%
FALL/SLIP/TRIP NOC	1,103	11.80%	ANIMAL OR INSECT	60	0.64%
FALL ON ICE OR SNOW	32	0.34%	EXPLOSION/FLARE BACK	5	0.05%
FALL ON STAIRS	109	1.17%	FOREIGN BODY IN EYE	37	0.40%
CRASH OF WATER VEHICLE	2	0.02%	PERSON (CRIMINAL ACT)	74	0.79%
CRASH OF RAIL VEHICLE	2	0.02%	OTHER THAN PHYSICAL	125	1.34%
MOTOR VEHICLE COLLISION	280	2.99%	MOLD	6	0.06%
FIXED OBJECT/COLLISION	34	0.36%	GUNSHOT	9	0.10%
AIRPLANE CRASH	1	0.01%	REPETITIVE MOTION	314	3.36%
VEHICLE UPSET	40	0.43%	RUBBED/ABRADED NOC	3	0.03%
MOTOR VEHICLE NOC	229	2.45%	CUMULATIVE ALL OTHERS	67	0.72%
CONTINUAL NOISE	9	0.10%	OTHER MISC. CAUSES	473	5.06%
			TOTAL	9,349	100.00%

TOP FIVE PARTS OF BODY AFFECTED BY INJURIES 2023



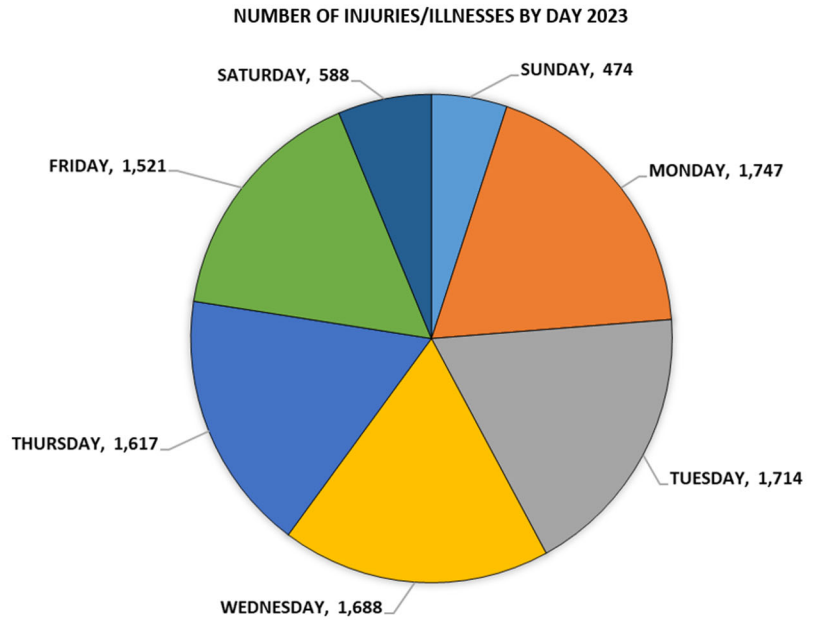
INJURIES/ILLNESSES BY MONTH 2023

MONTH	NUMBER	PERCENT
JANUARY	758	8.11%
FEBRUARY	723	7.73%
MARCH	857	9.17%
APRIL	734	7.85%
MAY	813	8.70%
JUNE	742	7.94%
JULY	803	8.59%
AUGUST	901	9.64%
SEPTEMBER	774	8.28%
OCTOBER	796	8.51%
NOVEMBER	753	8.05%
DECEMBER	695	7.43%
TOTAL	9,349	100.00%



INJURIES/ILLNESSES BY DAY 2023

DAY	NUMBER	PERCENT
SUNDAY	474	5.06%
MONDAY	1,747	18.67%
TUESDAY	1,714	18.84%
WEDNESDAY	1,688	17.80%
THURSDAY	1,617	17.59%
FRIDAY	1,521	15.35%
SATURDAY	588	6.67%
TOTAL	9,349	100.00%



INJURIES/ILLNESSES BY COUNTY 2023

DESCRIPTION	NUMBER	PERCENT
ADAMS	55	0.59%
ALCORN	77	0.82%
AMITE	21	0.22%
ATTALA	38	0.41%
BENTON	11	0.12%
BOLIVAR	56	0.60%
CALHOUN	19	0.20%
CARROLL	8	0.09%
CHICKASAW	54	0.58%
CHOCTAW	14	0.15%
CLAIBORNE	16	0.17%
CLARKE	20	0.21%
CLAY	80	0.86%
COAHOMA	44	0.47%
COPIAH	75	0.80%
COVINGTON	45	0.48%
DESOTO	763	8.16%
FORREST	380	4.06%
FRANKLIN	7	0.07%
GEORGE	31	0.33%
GREENE	27	0.29%
GRENADA	77	0.82%
HANCOCK	98	1.05%
HARRISON	661	7.07%
HINDS	948	10.14%
HOLMES	39	0.42%
HUMPHREYS	18	0.19%
ISSAQUENA	1	0.01%
ITAWAMBA	86	0.92%
JACKSON	255	2.73%
JASPER	29	0.31%
JEFFERSON	11	0.12%
JEFFERSON DAVIS	6	0.06%
JONES	297	2.71%
KEMPER	7	0.07%
LAFAYETTE	162	1.50%
LAMAR	34	0.36%
LAUDERDALE	197	2.11%
LAWRENCE	25	0.27%
LEAKE	59	0.63%
LEE	405	4.33%
LEFLORE	91	0.97%

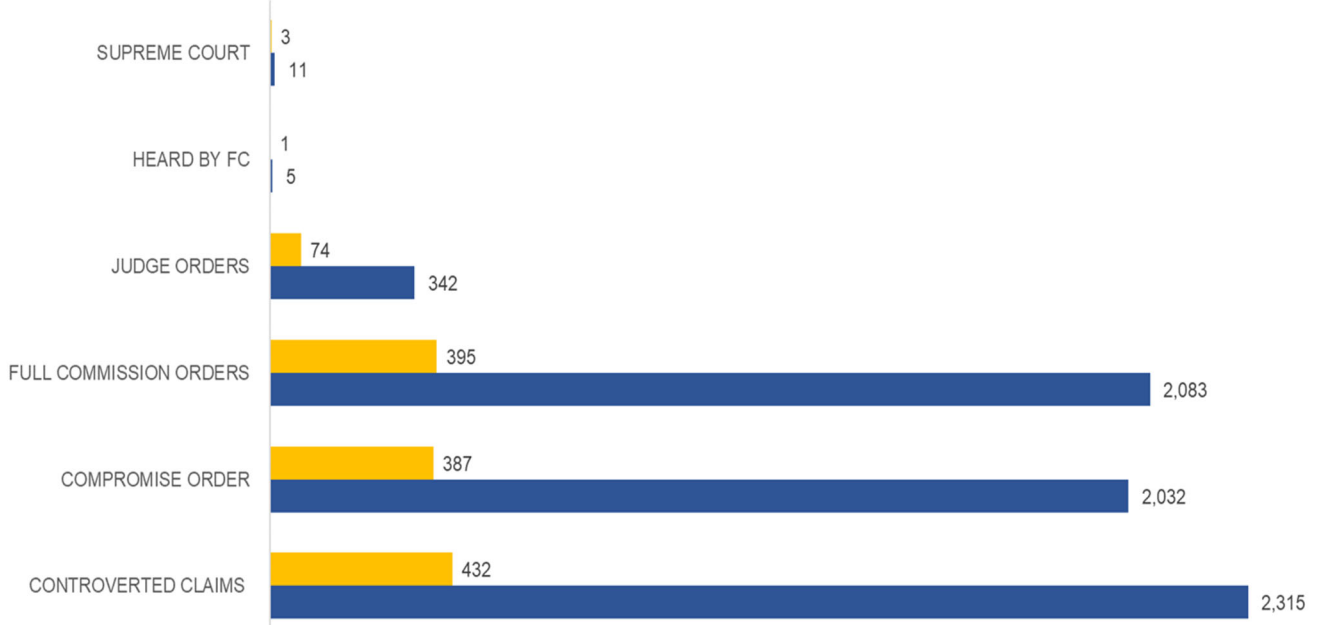
DESCRIPTION	NUMBER	PERCENT
LINCOLN	120	1.28%
LOWNDES	162	1.73%
MADISON	544	5.82%
MARION	48	0.51%
MARSHALL	160	1.71%
MONROE	59	0.63%
MONTGOMERY	28	0.30%
NESHOBA	86	0.92%
NEWTON	42	0.45%
NOXUBEE	19	0.20%
OKTIBBEHA	113	1.21%
PANOLA	83	0.89%
PEARL RIVER	80	0.86%
PERRY	13	0.14%
PIKE	137	1.47%
PONTOTOC	130	1.39%
PRENTISS	52	0.56%
QUITMAN	10	0.11%
RANKIN	422	4.51%
SCOTT	122	1.30%
SHARKEY	14	0.15%
SIMPSON	93	0.99%
SMITH	28	0.30%
STONE	43	0.46%
SUNFLOWER	69	0.74%
TALLAHATCHIE	25	0.27%
TATE	46	0.49%
TIPPAH	60	0.64%
TISHOMINGO	45	0.48%
TUNICA	40	0.43%
UNION	240	2.57%
WALTHALL	4	0.04%
WARREN	122	1.30%
WASHINGTON	107	1.14%
WAYNE	21	0.22%
WEBSTER	22	0.24%
WILKINSON	16	0.17%
WINSTON	36	0.39%
YALOBUSHA	24	0.26%
YAZOO	50	0.53%
OUT OF STATE	445	4.76%
UNKNOWN	2	0.02%
TOTAL	9,349	100.00%

Hinds County was the county with the highest number of occurrences with 948 claims.

DeSoto County followed with 763 claims and Harrison County had 661 claims.

CONTROVERTED CASES ASSOCIATED WITH SELF-INSURED

2023 STATISTICS ASSOCIATED WITH SELF-INSURED EMPLOYERS



	CONTROVERTED CLAIMS	COMPROMISE ORDER	FULL COMMISSION ORDERS	JUDGE ORDERS	HEARD BY FC	SUPREME COURT
■ SELF-INSURED	432	387	395	74	1	3
■ TOTAL	2,315	2,032	2,083	342	5	11

■ SELF-INSURED ■ TOTAL